



# HARDWOOD LUMBER AUCTION ONLINE ONLY

**ONLINE AUCTION OPENS MAY 1, 2017 AT 10:00 AM  
ONLINE AUCTION STARTS TO CLOSE MAY 8, 2017 AT 10:00 AM**

**Large Selection of KANSAS NATIVE HARDWOOD LUMBER**

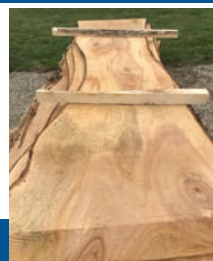


**To browse, bid and purchase  
log on to [www.dlwebb.com](http://www.dlwebb.com)**

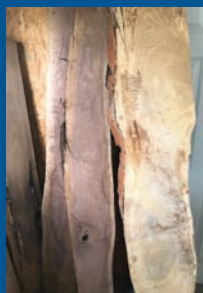


**19898 Metcalf, Stilwell, Kansas  
and  
31225 NW Geary Road, Garnett, Kansas  
OPEN HOUSE & INSPECTION  
Wednesday, May 3 • Noon to 4:00 PM  
Both Locations**

**Auction includes thousands of board feet of mostly  
WALNUT, OAK, PECAN, ELM, CYPRUS, ASH, LOCUST AND MORE.  
All cut with Woodmizer band saw mill. Most full one inch cut, large selection  
of live edge and finished edge, some quarter sawn; Various lengths.  
Large unique mantle pieces. Large table pieces.**



*Large display pieces. Unique cuts for displays, tables  
or benches. Several can be butterfly joined for unique  
matching grain tables.  
Large slabs from 16" wide to 48" wide, some with oval cut.*



**Auction Arranged & Conducted by:**

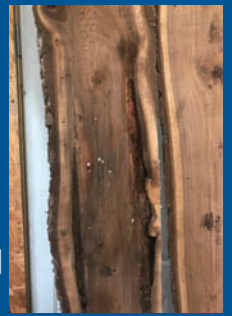
**Dave Webb, Webb & Associates Auctions & Appraisals  
Stilwell, Kansas • [www.dlwebb.com](http://www.dlwebb.com) • 913-681-8600**



# Large Selection of KANSAS NATIVE HARDWOOD LUMBER



## HARDWOOD LUMBER AUCTION • ONLINE ONLY



ONLINE AUCTION OPENS MAY 1, 2017 AT 10:00 AM  
ONLINE AUCTION STARTS TO CLOSE MAY 8, 2017 AT 10:00 AM



**Auctioneer's Note:** If you're a wood worker, have an affinity for native lumber, or are wanting native lumber to build furniture, decorate houses, churches, restaurants, commercial projects, casket builder, taxidermist, or just like wood, **THIS AUCTION HAS THE HARDWOOD YOU HAVE BEEN LOOKING FOR.** Make sure to visit one of the Open Houses to inspect the wood. Log on browse, bid, and purchase one lot or several lots; you will be glad you did.

*Thank you for taking part in this auction.*

### Local pickup only:

19898 Metcalf, Stilwell, Kansas and  
31225 NW Geary Road, Garnett, Kansas  
**Thursday, May 11 - Noon to 4 PM**  
**Friday, May 12 - 8 AM to Noon**

**OPEN HOUSE & INSPECTION**  
Wednesday, May 3 • Noon to  
4:00 PM • Both Locations



**To BROWSE , BID & PURCHASE go to [www.dlwebb.com](http://www.dlwebb.com)**



Terms: MasterCard, Visa, American Express. Not responsible for accidents or lost items or misrepresentation of sale items by owners or Auction Company. All items sell as is / where is without warranty expressed or implied. Auctioneer is agent of seller only. 10% buyers premium on all purchases. Kansas sales tax of 7.725% applies.

